

KENNESAW STATE



LACROSSE CLUB

2
0
1
0

Scott Schulze

MCLA All-American, SELC Offensive Player of the Year, First Team SELC Attackman

Charles Roland

First Team SELC Midfielder

Zach Statham

Honorable Mention SELC Defenseman

INFORMATION AND MEDIA GUIDE

www.KSUJLAX.com

2010 KSU Club Lacrosse General Information

Lacrosse Quick Facts

Name: Kennesaw State University
 Location: Kennesaw, Georgia
 Founded: 1963
 Enrollment: 21,060
 Nickname: Fighting Owls
 Colors: Black and Gold
 Field Surface: Turf
 Affiliation: MCLA Division 2
 Conference: SELC Central
 Website: www.ksulax.com
 Facebook: facebook.com/ksulax
 Twitter: twitter.com/kstatelax
 University President: Dr. Dan Papp
 Club Sports Director: Laura St. Onge
 Head Coach: Ken Byers
 Assistant Coach: Mark Stopher
 Rehab Specialist: Mark Tomasello
 Team President: Charles Roland
 Team Captain: Charles Roland
 Team Captain: Noah Rosenblum

DATE	DAY	TIME	OPPONENT	LOCATION
Feb. 6	Sat.	12 PM	Tenn. Wesleyan*	KSU - Owl's Nest
Feb. 20	Sat.	5:30 PM	Missouri State	KSU - Owl's Nest
Feb. 22	Mon.	3 PM	Davenport	KSU - Owl's Nest
Feb. 25	Thu.	8 PM	Georgia State*	Georgia State University
Feb. 28	Sun.	12 PM	North Florida	KSU - Owl's Nest
Mar. 7	Sun.	4:30 PM	Texas - San Antonio	Texas - San Antonio
Mar. 8	Mon.	6:30 PM	Sam Houston State	Sam Houston State
Mar. 9	Tue.	7 PM	Centenary	Centenary College
Mar. 20	Sat.	12 PM	Furman*	KSU - Owl's Nest
Mar. 21	Sun.	12 PM	Tenn. Chattanooga	KSU - Owl's Nest
Mar. 27	Sat.	2 PM	Reinhardt*	Reinhardt College
Mar. 28	Sun.	12 PM	Harding	KSU - Owl's Nest
Apr. 2	Fri.	6 PM	Georgia Southern	Georgia Southern
Apr. 3	Sat.	4 PM	SCAD	SCAD Field
Apr. 9	Fri.	7:30 PM	Emory*	KSU - Owl's Nest
Apr. 11	Sun.	12 PM	Palm Beach Atlantic	KSU - Owl's Nest
Apr. 23	Fri.	All Day	SELC Championship	Northview High School

* Denotes Divisional Game

Kennesaw State University proudly supports the following collegiate club sports:

Competitive Cheer
Competitive Fishing
Club
Cycling
Equestrian
Ice Hockey

Lacrosse (M & W)
Paintball
Roller Hockey
Rugby
Soccer (M & W)
Swim

Tennis (Co-Ed)
Triathlon
Ultimate Frisbee
Volleyball (M)
Wakeboard
Wrestling



Kennesaw State University
 Collegiate Club Sports
 1000 Chastain Road
 Kennesaw, GA, 30144 ; Mail Drop 7901
 The Owls Nest
 Phone: 678-797-2915

www.ksuclubsports.com

Cover Design by Scott Mathews • Text by Ken Byers • Bio Photos By Kelly Byers • Layout by Brett Davies

2010 KSU Club Lacrosse Season Preview

Overview

The Kennesaw State Owls are extremely optimistic on their chances of competing for a Southeastern Lacrosse championship in 2010. A strong foundation has been established during the past four seasons in preparation for this year's KSU squad. Talented transfer players, quality freshman recruits, six out of conference MCLA games and a new synthetic turf field all add to the expectation the Owls have for this spring. The coaches have installed the phrase of "raise the bar" as a motivating goal for the team to improve on last year's 11-2 effort. The Owls feel they have a real opportunity to advance into the Southeastern Lacrosse Conference playoffs. Possibilities exist that KSU could earn a spot in the national Men's Collegiate Lacrosse Association tournament held in Denver, Colorado. In 2009 the team received many accolades for players and coaches. The team is most proud of being recognized by the University as "Best Club Sport Team" on campus for the second consecutive year. KSU experienced success during the fall season playing difficult opponents each week. The Owls anticipate flying high in the national polls. With dedicated work by the players, avoiding injuries and our strong supporting fan base, "clearing the bar" is within in our reach!

Attack

In 2010 the spotlight is on SCOTT SCHULZE. He was chosen as a 2009 MCLA All-American, voted "Offensive Player of the Year" by SELC coaches and earned a spot as a First Team SELC attack man. It is no secret that he is a catalyst to the powerful attack of the Owls offense. TIM MINICK will again be the big finisher from his position on the crease. Freshman standout TRENT DEAN is pushing ELLIOT MITCHELL for the third spot on the attack unit. KYLE FOSTER, JONNY SLUTZKY, TYLER YELKEN and ERIC WELLS are all in the mix and will add the needed depth to the potent KSU offense. Accurate shooting will be the key for the Owls offense to be successful. The coaches expect the attack unit to be on target by improving their shooting percentage from last year.

Midfield

The Owls midfield picked up a number of skilled and experienced players for the 2010 season. The KSU midfields will look a little different this year. Depth and scoring ability are improved immediately with the addition of Tennessee Wesleyan transfers MARK TORTORELLO and ANDREW CONGLETON. First Team SELC midfielder CHARLES ROLAND returns for this senior year and will be teamed with the high scoring JUSTIN MCKAY. ISOM WHITE will be counted on to anchor the second line along with CASEY NEWTON, DAN RUBENSTEIN. Positions will change as each midfielder finds his role on this year's squad. JUSTIN GRIFFTH, KEITH LAMB, WILL KANSTIOS, CASEY NEWTON, ANTHONY WINTERS and

DAVE PENDAS will challenge each other for playing time. The spots open within the KSU squad are on the third line and short stick defensive midfield positions. Depth at these positions is a luxury that the Owls have not possessed in previous seasons.

Defense

The Kennesaw State University defensive unit was a very strong, cohesive group in 2009. The team only allowed opponents an average of six goals against them per contest. Defensive coordinator, MARK STOPHER was content last year with the team's effort. He expects even a stronger defensive unit with talented additions in 2010. Returning goalies NOAH ROSENBLUM and KYLE HANSEN will battle for time in the cage. The starting close defense will use a rotation with TOM MUDRAK, MURRAY WEBB, RORY KEOWN and JAMES FAUCETTE. Playing long stick midfield for the Owls will be 2009 SELC Honorable Mention selection ZACH STATHAM. He will be relieved at times by TYLER SCHRAMPFER and SPENCER HEITT. Adding depth to the punishing KSU defense will be ZACH HARRELL, SCOTT MATHEWS, MIKE PEREZ and goal keeper ANTHONY TSIRIGOS. This defensive unit will keep the Owls in every game and make it very difficult for opponents to score goals this season.

Coaching Corner

Different preseason polls are predicting big things for the Owls this spring. KSU Coach KEN BYERS was voted by his peers as the 2009 SELC "Coach of the Year". He has built the ground work for another successful campaign this year. Support from the administration has been demonstrated by the addition of our new "Owls Nest" facilities. The Kennesaw State lacrosse program is based on a "student first, athlete second" philosophy and the team strictly enforces this policy. According to Coach Byers, "Our opponents know about the KSU program and our team is ready to take it to the next level." This season the Kennesaw State University Owl Lacrosse Club is ready for the "bar to be raised." 2010 is expected to be another exciting lacrosse season for the high flying KSU Lacrosse Owls. Come out and cheer them on!



Scott Schulze (left), Captain Charles Roland (center) and Zach Stathman (right) look forward to leading the Owls to a successful 2010 season.

2010 KSU Club Lacrosse Team Roster

Numerical

#	Name	Position	Height	Weight	High School	Year
1	Noah Rosenblum	Goalie	5' 11"	175 lbs.	Maclay	Sophomore
2	Charles Roland	Midfield	6' 0"	195 lbs.	Etowah	Senior
3	David Pendas	Midfield	6' 0"	175 lbs.	North Gwinnett	Sophomore
4	Trent Dean	Attack	6' 1"	165 lbs.	Harrison	Freshman
5	Mark Tortorello	Midfield	6' 1"	180 lbs.	Etowah	Sophomore
6	Isom White	Midfield	6' 0"	150 lbs.	McEachern	Junior
7	Tom Mudrak	Defense	6' 2"	210 lbs.	Lakeside-Evans	Sophomore
8	Scott Mathews	Def. / Goal	6' 1"	185 lbs.	Sprayberry	Sophomore
9	Casey Newton	Att. / Mid.	6' 1"	200 lbs.	Lassiter	Freshman
10	Zach Harrell	Defense	5' 11"	175 lbs.	Starr's Mill	Sophomore
11	Justin Griffith	Defense	6' 3"	180 lbs.	Pope	Freshman
12	Will Kantsios	Midfield	5' 8"	160 lbs.	North Springs	Junior
13	Andrew Congleton	Midfield	5' 10"	155 lbs.	McEachern	Sophomore
14	Anthony Winters	Midfield	5' 10"	150 lbs.	North Cobb	Freshman
15	Jonny Slutzky	Att. / Mid.	5' 11"	165 lbs.	Wheeler	Junior
16	Spencer Hiett	Defense	6' 0"	190 lbs.	Lassiter	Freshman
17	Eric Wells	Attack	5' 11"	155 lbs.	Milton	Freshman
19	Justin McKay	Midfield	5' 11"	170 lbs.	South Forsyth	Sophomore
20	Tyler Schrapfper	Defense	6' 0"	200 lbs.	Kennesaw Mountain	Senior
21	Scott Schulze	Attack	5' 7"	160 lbs.	Northview	Junior
22	Kyle Hansen	Goalie	6' 1"	180 lbs.	Roswell / McCallie	Junior
23	Kyle Foster	Attack	6' 6"	160 lbs.	Northview	Freshman
24	Tim Minick	Attack	6' 0"	220 lbs.	Kennesaw Mountain	Senior
25	Murray Webb	Defense	6' 3"	220 lbs.	The Webb School	Senior
26	Rory Keown	Defense	6' 0"	190 lbs.	Newnan	Sophomore
28	James Faucette	Midfield	6' 2"	210 lbs.	Kennesaw Mountain	Senior
29	Zach Statham	Defense	6' 0"	180 lbs.	Kell	Senior
30	Anthony Tsirigos	Goalie	6' 2"	290 lbs.	South Forsyth	Freshman
31	Keith Lamb	Midfield	6' 1"	190 lbs.	Tucker	Freshman
32	Elliott Mitchell	Att. / Mid.	5' 11"	160 lbs.	Kell	Junior
33	Dan Rubenstien	Midfield	6' 1"	190 lbs.	Sprayberry	Junior
34	Tyler Yelken	Att. / Mid.	5' 11"	205 lbs.	Woodstock	Junior
35	Michael Perez	Defense	5' 8"	195 lbs.	McEachern	Freshman

Alphabetical

#	Name
13	Congleton, Andrew
4	Dean, Trent
28	Faucette, James
23	Foster, Kyle
11	Griffith, Justin
22	Hansen, Kyle
10	Harrell, Zach
16	Hiett, Spencer
12	Kantsios, Will
26	Keown, Rory
31	Lamb, Keith
8	Mathews, Scott
19	McKay, Justin
24	Minick, Tim
32	Mitchell, Elliott
7	Mudrak, Tom
9	Newton, Casey
3	Pendas, David
35	Perez, Michael
2	Roland, Charles
1	Rosenblum, Noah
33	Rubenstien, Dan
20	Schrapfper, Tyler
21	Schulze, Scott
15	Slutzky, Jonny
29	Statham, Zach
5	Tortorello, Mark
30	Tsirigos, Anthony
25	Webb, Murray
17	Wells, Eric
6	White, Isom
14	Winters, Anthony
34	Yelken, Tyler

Head Coach Ken Byers **Assistant Coach** Mark Stopher **Team Doctor** Michael Tomasello **Manager** Jamie Durio

2010 KSU Club Lacrosse Team Photo



2010 KSU Club Lacrosse Player Biographies



1 Noah Rosenblum Goalie Junior 5-11 175 lbs. Maclay

Noah earned a starting role in goal for the Owls in 2009. After an early season injury he posted an impressive save average of 59 percent. He is a defensive leader for KSU and controls the defense well. Noah is the first player from Florida to be on the Owls lacrosse roster. Noah played four years of varsity lacrosse at Maclay HS earning All District and All County honors. He enjoys college football.

2 Charles Roland Midfield Senior 6-0 195 lbs. Etowah

Charles earned SELC First Team honors last season scoring 32 goals and assisting on 14 other goals. He was selected as an SELC Honorable Mention midfielder in 2008. As a player he competes at a very high level and has a good understanding of the game. Charles won a NGLL Championship at Etowah in 2006 along with NGLL honors in 2005 and 2006. Charles was awarded the KSU Coaches Award of Excellence in 2008 and is the KSU Lacrosse Club President.



3 David Pendas Midfield Sophomore 6-0 175 lbs. North Gwinnett

David has a terrific attitude about lacrosse and great endurance. He is a very hard worker on and off the field. David is quality product from the North Gwinnett Blackhawks and won a championship in the NGLL. He is looking forward to learning the KSU system and contributing in future seasons. He will add depth to the midfields this spring.

4 Trent Dean Attack Freshman 6-1 165 lbs. Harrison

Trent had a strong fall season and will be trying to land a spot as a starting attackman or midfielder. He sees the field extremely well and sets up teammates for scoring opportunities with great feeds. Trent is a player that will help build a strong offense on future KSU teams. A standout at Harrison HS and he earned All-State Honors in 2008 and 2009. He enjoys all types of sports in his off time.



5 Mark Tortorello Midfield Sophomore 6-1 180 lbs. Etowah

Mark is another transfer student from SELC division rival, Tennessee Wesleyan. In 2009 as a midfielder for the Bulldogs he scored 11 goals and dished out 9 assists. He is extremely fast and has a hard left-handed shot. The Owls will use him on the man up unit and he will add scoring punch to the KSU midfields. Mark played football and lacrosse at Etowah HS. Snowboarding in the winter is what this player enjoys as a hobby.

6 Isom White Midfield Junior 6-0 150 lbs. McEachern

Isom recorded 9 goals, 5 assists and 28 ground balls in 2009. He has an excellent attitude, is very vocal and is a team leader. Isom is still considered one of the fastest midfielders in the SELC. He leads the Owls by example and plays tough one on one midfield defense. He was the 2006 team captain at McEachern HS. Isom is very energetic with team activities and projects off the field as well.



2010 KSU Club Lacrosse Player Biographies



7 Tom Mudrak Defense Sophomore 6-2 210 lbs. Lakeside-Evans

Tom transferred to KSU from Presbyterian College in South Carolina. He brings with him experience at the NCAA Division One level. Tom made a terrific impression on the coaches during the fall season. He is a strong and talented athlete that is looking forward to his first season with the Owls. Tom is very dedicated and has great heart. The coaches expect him to earn a starting spot on the tough KSU defense. His size, strength and ability will make him a standout at close defense. He enjoys all sports and music.

8 Scott Mathews Defense/Goalie Sophomore 6-1 185 lbs. Sprayberry

Early in the 2009 season the KSU squad needed a reserve goalie. Scott bravely answered the call and played extremely well as the KSU keeper at different times last season. He is a natural leader and has a lot of integrity. This season he will go back to his natural position at close defense but may make an appearance in cage if needed by the Owls. He earned Most Improved Player two years in a row at Sprayberry HS. Scott is a car salesman in his off time and enjoys playing the guitar.



9 Casey Newton Midfield Freshman 6-1 200 lbs. Lassiter

Casey is a great addition to the KSU squad for 2010. He is a big, strong and experienced midfielder that played for Etowah HS in the North Georgia Lacrosse League and Lassiter HS. He is very coachable and a solid midfielder with a good hard shot. Casey is a United States Marine Corp veteran who was deployed in Afghanistan. He is married to his beautiful and supporting wife, Erin. He enjoys being home with her.

10 Zach Harrell Defense Sophomore 5-11 175 lbs. Starr's Mill

This will be Zach's second year playing for KSU. He is a smart positional defender that will help relieve the starters this season. Zach has played for Starr's Mill HS and has improved in many areas that will help him see more time on the field. His hobbies include golf, watching football and exercising to stay in shape.



11 Justin Griffith Defense/Midfield 6-3 180 lbs. Pope

Justin loves lacrosse and tells people he cannot live without it. The coaches noticed this attitude in the fall by his relentless effort on ground balls. In 2010 he will be used in multiple positions for the Owls. Justin excels in whatever he attempts and earned the "Unsung Hero" award at Pope HS. He enjoys shooting pool, golf and swimming.

12 Will Kantsios Midfield Junior 5-8 160 lbs. North Springs

Will was a circuit midfielder last season. He was plugged in on different midfield lines and will add depth to the KSU midfield again this spring. At North Springs HS, Will was selected team captain, voted 2006 Most Improved Player and 2007 MVP. In his off time he enjoys staying in shape by weightlifting.



2010 KSU Club Lacrosse Player Biographies



13 Andrew Congleton Midfield Sophomore 5-10 155 lbs. McEachern
Andrew is the second Tennessee Wesleyan Bulldog that jumped ship and joined the KSU squad. He earned Second Team SELC honors last season for his productive play at midfield tallying 8 goals and 9 assists. Andrew has an outstanding work ethic and is very coachable. He is looking forward to his first season at KSU. He will be running on the first or second midfield lines. He is a big college and pro football fan.

14 Anthony Winters Midfield Freshman 5-10 150 lbs. North Cobb
Anthony is a dedicated and committed blue collar midfielder. KSU will use him to add depth to the midfield and possibly use him as a short stick midfield defender. Anthony has shown desire and effort to compete during fall ball. In his spare time he teaches martial arts and is a third degree black belt.



15 Jonny Slutzky Attack Junior 5-11 165 lbs. Wheeler
Jonny continues to add great versatility to Kennesaw's attack and midfield units. He produced 9 goals and 2 assists in 2009. He is expected to challenge the starters on the attack unit for their spots and be used in spot situations on the midfield. He is extremely fast and a fierce competitor. At Wheeler HS he was a three year starter. He enjoys working out, jet skiing at the lake and staying in great physical shape.

16 Spencer Hiett Defense Freshman 6-0 190 lbs. Lassiter
Spencer has a terrific love for the game of lacrosse and expects to be successful at the collegiate level. His confidence comes after earning two varsity letters at Lassiter HS and being a member of the Red Rooster Lacrosse Club. Spencer is a quick reacting defenseman that will help add a depth to a tough KSU defensive unit. He has a solid work ethic, good stick skills, is very dependable and is very coachable.



17 Eric Wells Attack Freshman 5-11 155 lbs. Milton
Eric joined the team late in the fall capturing a roster spot for the 2010 season. He is an excellent athlete and a committed to improving his game. Eric will fill in on the attack unit and relieve the starters as needed. The coaches anticipate him being a productive asset once he learns the Owl system. He has the ability for scoring goals not many other players could make and KSU is looking for him to score a lot in 2010.

19 Justin McKay Midfield Junior 5-11 170 lbs. South Forsyth
Justin had a real break out year in 2009. He scored 21 goals, assisted on 17 others and led the team in groundballs with 46. Justin ran on the first midfield last season and will be a bigger offensive threat in 2010. He is a great dodger and makes perfect feeds to his teammates. At South Forsyth, Justin was named Team MVP twice and earned All State honors in 2007. He enjoys flag football when he is not playing lacrosse.



2010 KSU Club Lacrosse Player Biographies



20 Tyler Schramper Defense Sophomore 6-0 200 lbs. Kennesaw Mountain

Tyler has a physical style of play that helped him earn a starting spot on the defensive unit last season. In 2009, he led all KSU defensemen with 35 ground balls. He is a big, intelligent and strong positional defender. His ability to tightly cover the opponent's is one of the main reasons the KSU defense only allowed an average of 6 goals against per contest last year. During the off season Tyler is an outdoorsman enjoying hunting and fishing.

21 Scott Schulze Attack Junior 5-8 160 lbs. Northview

Last season the Men's Collegiate Lacrosse Association recognized Scott as an All-American, Honorable Mention selection. After producing 34 goals and 19 assists from his attack spot, other league coaches voted him the 2009 SELC Offensive Player of the Year. Along with those awards Scott earned First Team SELC recognition for the Owls and KSU's Offensive MVP last season. In 2008, Scott was named SELC Rookie of the Year and was KSU's Offensive MVP. In high school Scott received MVP recognition from Team Georgia in 2005, 2006 and 2007. He enjoys outdoor activities.



22 Kyle Hansen Goalie Junior 6-1 180 lbs. McCallie School

Kyle returns to action after missing the entire 2009 season. He is a solid ball stopper, has quick hands and clears extremely well. In 2008, Kyle received Honorable Mention recognition for his play in the Southeastern Lacrosse Conference averaging just under 10 goals against per game. Kyle was named KSU's 2007 Defensive MVP. He played three years at Roswell HS before finishing at McCallie with a Tennessee High School Championship in 2005. Kyle played collegiate lacrosse for Mars-Hill in North Carolina before transferring to KSU.

23 Kyle Foster Attack Freshman 6-6 175 lbs. Northview

Kyle is a tall athletic attackman that will have immediate impact for the KSU offense. His large frame enables him to protect the ball enabling him to set up other players to score. Kyle is a very coachable player that has worked this way quickly into the Owls offensive schemes. He will add depth to the high powered offense and may be used on the extra man unit this spring.



24 Tim Minick Attack Senior 6-0 210 lbs. Kennesaw Mountain

Tim had a very successful season in 2009. He scored 31 goals, dished out 10 assists and scooped up 29 ground balls. Against Georgia Southern he tied a team record by scoring six goals in one game. Tim was awarded KSU's Most Improved Player Award for 2008. He was the Kennesaw Mountain HS Team MVP in 2003 and 2004. He is a natural team leader and is very knowledgeable regarding lacrosse. His hobbies include golf, sailing, snowboarding and darts. He continues to be a dance instructor and writes his own songs.

25 Murray Webb Defense Senior 6-3 220 lbs. The Webb School

Murray was a great addition to the KSU squad in 2009. His size, speed and ability to cover opponents helped the Owls in many ways. He is a transfer student from Hampton-Sydney College in Virginia. Murray has a great personality and can always be counted on when the chips are down. He is a positive role model for other players on the squad. During his off time he pays attention to investments and the stock market.



2010 KSU Club Lacrosse Player Biographies



26 Rory Keown Defense Sophomore 6-0 190 lbs. Newnan

Rory comes back to KSU after missing the 2009 season. He began his career in 2008 playing close defense for the Owls. Rory returns with a new attitude, superior stick skills and a desire for an SELC championship. He has a knack for making some unbelievable checks on the opposition. He will supplement the close defense and maybe used on the man down unit. He is a product of Newnan HS and played in the North Georgia Lacrosse League. He is a big Crimson Tide fan.

28

James Faucette Defense Senior 6-2 210 lbs. Kennesaw Mountain

After missing the entire 2008 season James added a lot to the KSU squad in 2009. He is a very physical player that will again bolster the close defense. During the 2007 season James played midfield and made a smooth transition to playing defense last year. He is the type of player that every coach desires. In 2009 he earned the KSU Coaches Award of Excellence for activities on and off the field. James has great intensity, commitment and a knack for blocking shots from opponents. He enjoys outdoor activities and music.



29 Zach Statham Defense Senior 6-0 160 lbs. Kell

Zach earned SELC Honorable Mention consideration in 2009. He has won KSU's Defensive MVP the past two years and awarded Second Team SELC honors in 2008. Zach was KSU's first athlete to be recognized as National Scholar-Athlete for his efforts in the classroom and his on field performance. Zach is a past President of the team. His accomplishments include the team being recognized as the "Best Club Sports Team" in 2008 and 2009. He earned Defensive MVP at Kell in 2003 and 2005. He earned the KSU's Coach's Award of Excellence in 2007. His hobbies include golfing and fishing.

30

Anthony Tsirigos Goalie Freshman 6-2 290 lbs. South Forsyth

Anthony is looking forward to the experience of playing lacrosse in college. He has a great opportunity this season to learn the KSU system. He will be the foundation of future Owls defensive units. His primary assets are his positive attitude and unbelievable desire to stop the ball. In his off time he enjoys coaching, playing most other sports and listening to music.



31 Keith Lamb Midfield Freshman 6-1 190 lbs. Tucker

Keith will be a terrific player for future KSU squads. He is strong, has endurance and possesses sure handed stick skills. He is learning to adjust to the collegiate game. His size and ability to run the field will help him earn a spot on the Owl's midfields this year. He is a product of the North Georgia Lacrosse League playing his high school lacrosse at Tucker HS. His hobbies include most outdoor sports.

32

Elliot Mitchell Midfield Sophomore 5-11 160 lbs. Kell

Elliot is a quick, athletic player that demonstrates outstanding sportsmanship. Since last season he has improved his chances to compete for more game time at attack and midfield. The coaches realized his versatility during the fall plugging him into various spots on the offense. At Kell HS Elliot was awarded the Most Improved Player in 2008. His involvement in team projects off the field exhibits his dedicated commitment and leadership qualities. His hobbies include basketball and playing golf.

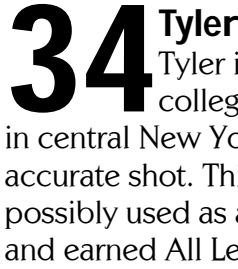


2010 KSU Club Lacrosse Player Biographies



33 Dan Rubenstein Midfield Junior 6-1 190 lbs. Sprayberry

Dan was a pleasant late season addition for the Owls. He picked up the KSU system easily and added depth to the midfields in 2009. He has good size and shooting ability. Dan is looking forward to 2010 and his first full season playing for the Owls. He is a very coachable player and interacts well with everyone. He played varsity lacrosse for Sprayberry HS. In his off time he gives back to the sport of lacrosse by coaching the youth programs associated with the Sprayberry program.



34 Tyler Yelken Attack Junior 5-11 205 lbs. Woodstock

Tyler is looking forward to playing for the Owls after gaining two years of collegiate experience at the JUCO level. He played for Cayuga Junior College in central New York in 2006 and 2007. Tyler is a strong, possession type player that has an accurate shot. This season he will be counted on to be a change of pace attackman and possibly used as a face off specialist. Playing for Woodstock HS Tyler has won an NGLL title and earned All League honors.



35 Michael Perez Defense Freshman 5-8 195 lbs. McEachern

Michael is in the process of learning the KSU system. He is looking forward to a successful and challenging season in 2010. Michael loves lacrosse and tries everyday to improve his skills and ability. He adds more depth to the Owl defense. Michael played lacrosse and wrestled at McEachern HS. He speaks French and Spanish. His hobbies include jogging and mixing music.



Charlie Roland #5 keeps his defender at arms length.

Photo by Cecil Copeland

Nuggs' hopes to be a rallying point for the team this season.

Photo by Kelly Byers



2010 KSU Club Lacrosse Coaching Staff

Ken Byers - Head Coach



Being a successful, nationally recognized competitive collegiate lacrosse program year in and year out is no easy task. Coach Byers has accomplished this in four years since the formation of the Kennesaw State program in 2006. His KSU career record is 32-20. Last season, Coach Byers was selected by his peers as the SELC "Coach of the Year". He has coached eight Southeastern Lacrosse Conference All League players and one All-American. Before his tenure at KSU, Ken started the program at Etowah High School. During that time, Etowah compiled a record of 45-22 and became an elite team in the North Georgia Lacrosse League. He was an assistant coach at Roswell HS from 1999-2001, earning a public HS Championship in 1999. From 1982-2002 he was a player/coach for the Atlanta Lacrosse Club. He produced an overall team record of 307 wins and 104 losses. During that time the ALC earned numerous league titles and tournament championships. He was recognized in 1992 as "Coach of the Year" by the Southeastern Lacrosse League. From 1991-1996 he participated as an Editorial Board member for Lacrosse Magazine. He played lacrosse for national junior college powerhouse Suffolk Community College on Long Island and then finished his collegiate career as a defenseman at Kutztown State in Pennsylvania. Ken still plays competitive lacrosse in national tournaments at the masters and grand masters level. Coach Byers is a member of the Positive Coaching Alliance and has been a certified lacrosse official. Recently, he earned his level one and level two coaching certification from US Lacrosse. On January 28, 2007 Coach Byers was inducted into the Georgia Lacrosse Hall of Fame for his outstanding accomplishments to the sport of lacrosse in the state of Georgia. Ken has served the citizens of Atlanta, Georgia for the past twenty eight years with the Atlanta Fire Rescue Department. He has achieved the rank of Assistant Chief working out of the busy downtown area of Atlanta. He is married to his wife Kelly and they have two children, Jennifer and Bryan.

Mark Stopher - Assistant Coach

Coach Stopher will return to the KSU sidelines for 2010 and be assigned the defensive responsibilities for the Owls. Mark grew up an All-County player for Jamesville DeWitt High School in New York. He attended Syracuse University playing close defense from 1986 to 1989. He earned All-American honors 1988 and 1989. In those same years, Mark won the Division 1 National Championship for the Orangemen with teammates Gary and Paul Gait. He currently is a member of the Atlanta Lacrosse Club. His wife Brenda works in the Athletic Department at Kennesaw State University. They have two children, Brianna 8 and Zachery 6.



Michael Tomasello - Volunteer Rehabilitation Specialist

Doctor Tomasello returns to KSU for another year of assisting the Owls. He started with the program during the 2008 season and has been a fixture at every home game since then. The Owls are extremely fortunate to have a person of his caliber to render treatment when injuries occur. Michael grew up in playing lacrosse in Connecticut earning two Coaches Awards at Westhill High School. He played midfield at the University of Massachusetts from 1982 to 1986. He has his own chiropractic practice in Kennesaw and works at Life Chiropractic College in Marietta. He is married and has six children.



Jamie Durio - Manager

Since 2006 Jamie has attended every game at home and travels on the road with the team. He is very knowledgeable about the game and is 110 percent dedicated to the KSU program. Jaime has plenty of experience as a manager with Lassiter HS, 2003-2005. KSU is very blessed to have a manager with the commitment of Jaime.



2009 KSU Club Lacrosse Season Review

In 2009, the Kennesaw State University Lacrosse team achieved its highest success to date producing a record of 11 wins and 2 losses. The team continued on its vision as being one of the more respected programs nationally and within the Southeastern Lacrosse Conference. Many accolades were bestowed upon the team, players and coaches during the season.

The team made an unbelievable run of eleven straight victories before being beaten out for a playoff spot by two nationally ranked divisional opponents. The SELC consistently remains a difficult conference with the many talented rich squads KSU must face each season. Early on in the season Coach Byers knew the team had arrived with victories over in town rival Georgia State and nationally ranked Savannah College of Art and Design. The victory over SCAD was KSU's first in four tries. During the season KSU broke through into the national rankings and remained there for several weeks. At times last year the Owls held positions within the MCLA Top Ten and finished the season ranked number 12 in the Laxpower.com poll and number 23 in the Collegelax.com poll of national coaches. 2009 was truly a break through year for KSU.

Throughout the season the team played with great enthusiasm and enormous effort. There were a few contests that were very memorable from the 2009 season. The Georgia State game was a true turning point for the KSU squad. In that game, the Owls dazzed a record home crowd and soundly defeated the rival Panthers 18 - 4. Another game that indicated the program had arrived was the 13 - 11 victory over Coach Mike Cummings the his nationally ranked SCAD Bees. Additionally, the Owls played extremely well on a road trip to Florida. They beat the University of North Florida 15-4 and beat Eckerd College 15 - 9. The season ended with tough losses to divisional rivals, Emory and Tennessee Wesleyan. The success of the 2009 season can never be diminished or downplayed by all those who participated.

For the first time in the program's history the Owls received two of the highest awards given by the Southeastern Lacrosse Conference. Sophomore SCOTT SCHULZE was chosen as an SELC First Team Attackman and the SELC's "Outstanding Offensive Player of the Year". He produced 34 goals and 19 assists. Schulze was also chosen as an honorable mention All-American by the MCLA panel of coaches in May. Along with Schulze, CHARLES ROLAND was recognized for his outstanding midfield play and named as a First Team SELC All League selection. KSU's defense was represented by defenseman ZACH STATHAM earning honors on the SELC defensive unit as an honorable mention selection. Finally, head

coach KEN BYERS was awarded the coveted "SELC Coach of the Year" award. Both the "Offensive Player of the Year" award and "Coach of the Year" award are voted on by the coaches of the SELC. Having KSU receive both of these awards last season made it very memorable for the team and university.

Off the field the Kennesaw State Owls retained possession of the "Best Collegiate Sports Club" trophy. The team was chosen for the second year in a row for this honor among 14 other KSU club sport teams. Many facets go into being awarded this as a "club sports team" and the team's leadership has much to do with its success. Team President ZACH STATHAM has done an exemplary job building the foundation for the club. The 2009 season has set the bar high for the future squads at KSU. It was a season to remember!

"Our program is exactly where it needs to be" advised Coach Byers. The university has installed a new synthetic turf field with lights and continues to support the program in the biggest ways. Coach Byers stated, "With our new field and abundance of talented recruits, KSU will be in the national spotlight. We will challenge for the 2010 SELC Championship." Last season was amazing for the KSU Owls and only the sky is the limit. Watch the Owls fly high in 2010. As always the entire KSU lacrosse program wants to thank our loyal fans for their commitment and dedicated support. See you on the field!

Scott Schulze #21 keeps his eyes downfield and heads to the goal.

Photo by Cecil Copeland



KSU Club Lacrosse Records and Awards

Individual Records

Goals Scored, Game	6 - Tim Minick vs. Georgia Southern, 2009 6 - JD Douthit vs. Citadel, 2007 6 - Robert Witt vs. UTC, 2006 6 - Robert Witt vs. Tennessee, 2006
Goals, Season	42 - Robert Witt, 2006
Assists, Game	6-JD Douthit vs. Western Carolina, 2006
Assists, Season	32 - JD Douthit, 2006
Points, Game	10 - Scott Schulze vs. Eckerd, 2009
Points, Season	64 - JD Douthit, 2006 (32g/32a)
Saves, Game	20-Kyle Hansen vs. Tenn. Wesleyan, 2008
Saves, Season	116 - Kyle Hansen, 2007 (14 games)
Ground Balls, Season	50 - Charles Roland, 2007

Team Awards

Offensive MVP	2009 - Scott Schulze 2008 - Scott Schulze 2007 - JD Douthit 2006 - JD Douthit
Defensive MVP	2009 - Zach Statham 2008 - Zach Statham 2007 - Kyle Hansen 2006 - Mohamad Said
Most Improved Player	2009 - Brian Broe 2008 - Tim Minick 2007 - Brett Davies 2006 - Tyler Davis
Coaches Award of Excellence	2009 - Robb Dreher & James Faucette 2008 - Alex Herrmann & Charles Roland 2007 - Robert Witt & Zach Statham 2006 - Alex Beasley & Anthony Grazanti
Rookie of the Year	2009 - Noah Rosenblum 2008 - James Nassur 2007 - Matt Byrne
Scholastic All American	2008 - Zach Statham

Team Records

Most Goals, Game	21 - Mercer University, 2009 21 - Georgia Southern, 2008
Most Goals Allowed, Game	24-Emory University, 2007
Biggest Win	16 - Georgia Southern, 21-5, 2008 16 - University of Alabama, 18-2, 2007
Worst Loss	17-University of South Carolina, 20-3, 2007
Number of Shutouts	1 - Alabama, 15-0, 2006
Longest Win Streak	11 games, 2009
Longest Losing Streak	4 games, 2008
Highest National Ranking	15 - MCLA D2 4-1-09 12 - LaxPower D2 4-1-09

Former Players

Andreas Arprian - 2006	Alex Herrmann - 2008-09
Sean Barsin - 2006-08	Craig Holman - 2007
Wes Bass - 2007-08	Michael Jaeckel - 2009
Wills Beadle - 2008	Justin Kratzer - 2009
Alex Beasley - 2006	Mitch Kruse - 2009
Dan Bittenger - 2009	Chris Lanquist - 2009
Brian Broe - 2008-09	Ian Lehrer - 2007
Chris Bruner - 2006	Louis Lim - 2009
Tanner Bruton - 2006-08	Jordan Lolley - 2008
Matt Byrne - 2007-09	Mike McCabe - 2006-2009
Gary Cason - 2007	Mike Micelli - 2008
Justin Claxton - 2006	Garrett Moll - 2007-08
Brett Davies - 2006-07	James Nassur - 2008-09
Tyler Davis - 2006	Steven Orebaugh - 2009
Dean Dobson - 2007-09	Arturo Sandoval - 2007
Jeremy Douthit - 2006-07	Manny Savas - 2009
Alex Drake - 2006-07	Anthony Scrimo - 2006
Robb Dreher - 2009	Ry Skinner - 2008
Matt Ellington - 2006	Tyler Therrell - 2007
Glenn Farakesh - 2007	Joseph Tofani - 2008
Justin Ferna - 2006-08	Brian Witt - 2009
Anthony Grazanti - 2007	Robert Witt - 2006-08
Drew Greeson - 2009	
Marcus Haverhals - 2007-08	
Scott Hearn - 2009	
Nathan Heffley - 2006	
Andrew Henderson - 2006	

Former Coaches

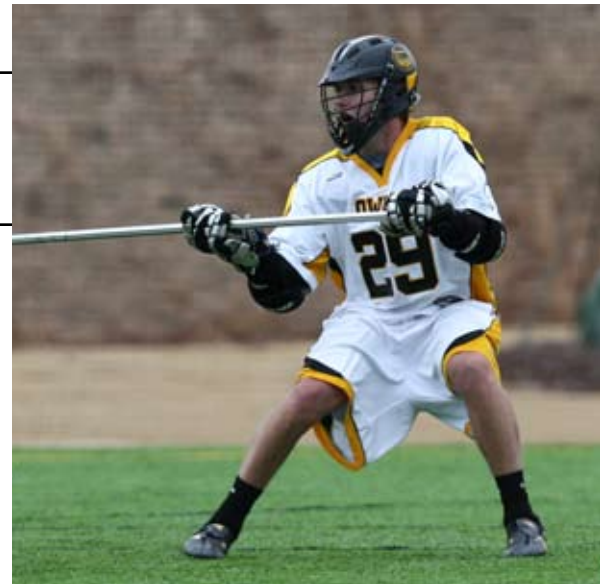
Jerry Douthit - 2006-07
Bill Seitz - 2008
Joe Tarogowski - 2006

Thank You to all past players and coaches who made the Kennesaw State Owl Lacrosse program what it is today!

2010 KSU Club Lacrosse Owls in Action



Zach Statham #29
breaks down and
throws a poke check.
Photo by Cecil Copeland



Noah Roseblum #1
looks for an outlet
to start a clear.
Photo by Cecil Copeland



Tim Minick #24
gets off the
ground to beat
the defense.
Photo by Cecil Copeland



Andrew Congleton #13
gets open and tries to
sneak a bounce shot in.
Photo by Cecil Copeland



Scott Schulze #21
drives at the goal
using his off-hand.
Photo by Cecil Copeland



Isom White #6
narrows his focus
and rips a shot.
Photo by Cecil Copeland



ATLANTA FIRE RESCUE

wishes the

KSU Club Lacrosse Owls

Good Luck in the 2010 Season



"ATLANTA'S BRAVEST"

Engine 15 Truck 15 Battalion 3



The Athletic Image

Our shoots take us from youth baseball to college rugby; from high school football to college lacrosse ... and whatever we can find in between!

Marietta, GA
678-386-2116
admin@theathleticimage.com



Invest in Your Spine Now!

*It will Pay Healthy Dividends
for the Rest of Your Life.*



Chiropractic is perfect for children and adults. It **WILL** make a difference in your health!



Dr. Lydia Dever
Gonstead Chiropractor



Dr. Michael Tomasello
Gonstead Chiropractor

We have great success in removing nerve pressure that may be related to:

- Numbness and Tingling
 - Sciatica
 - Back pain
- Ear infections
- Headaches
- Low energy



The Gold Standard in Chiropractic



678.290.3263

3903 Jiles Road • Kennesaw, GA 30144

www.hoopinsocker.com

Next to Legacy Park entrance



Today's KSU Lacrosse Game Is Being Filmed by Hi-Five Digital Productions!

Purchase Individual Game DVD for \$15.00

Or

10 Game Package for \$100.00 (\$10/game)

**Furman (TBD), Tenn.-Wesleyan (Feb. 6), Georgia State (Feb. 14), Davenport (Feb. 22)
North Florida (Feb. 28), Eckerd (March 21), Reinhardt (March 27), Harding (March 28)
Emory (April 9), Palm Beach Atlantic (April 11)**

To Order Game DVDs

See Skip Schulze

Or

Call 770-329-4435

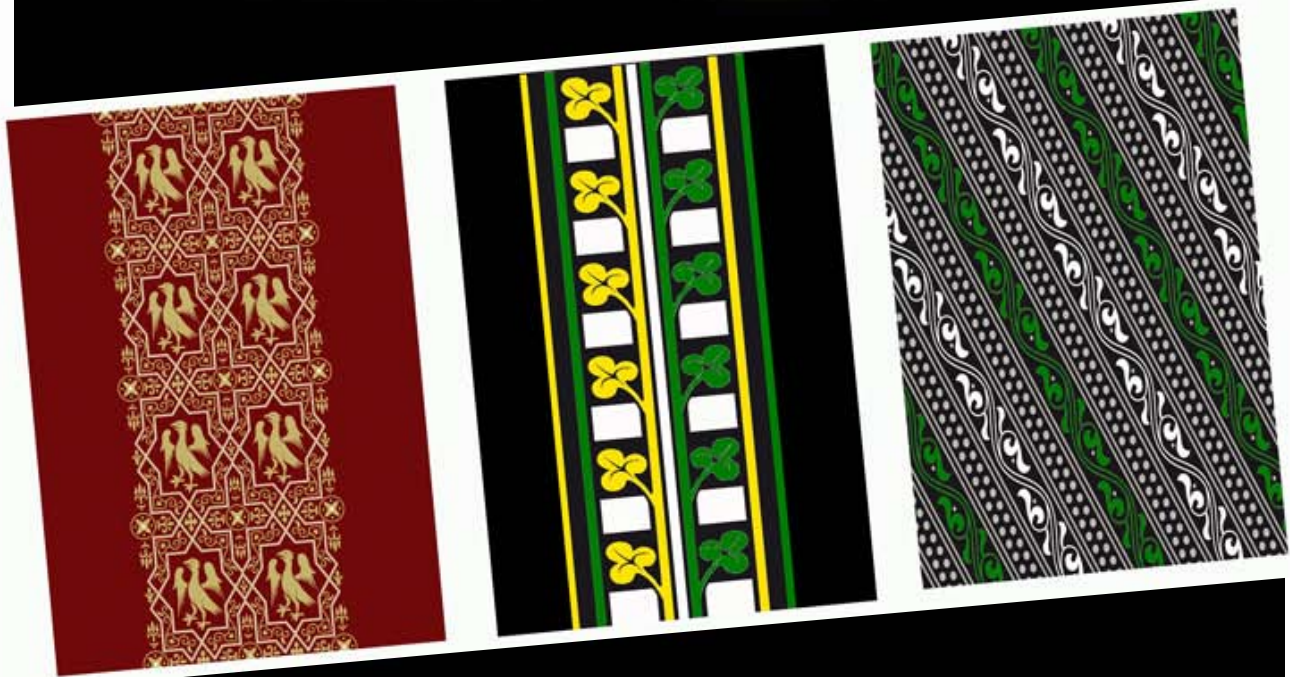
All Proceeds Go To the KSU Lacrosse Program

Support Your Owls!!

P.O. Box 674104, Marietta, GA 30006-0069 Phone: 404.723.5924 Facsimile: 770.952.3289

PROUD SPONSOR OF KSU LACROSSE

SUMMER



GOOZ

DETAILS: www.breakawaylacrosse.com



Address

920 Woodstock Road
Suite 240
Roswell, GA 30075
770-640-1200
770-640-1222 Fax

Hours of Operation

Mon. - Fri. 11:00am to 7:00pm
Sat. 11:00am to 5:00pm
Sun. 12:00pm to 4:00pm

Directions From GA 400

- Exit Holcomb Bridge Rd. going west to Roswell (Hwy. 92)
- Continue on Holcomb Bridge Road about 4.5 miles. The road will change names first to Crossville Road and then to Woodstock Road as you pass the King Road intersection.
- Home Depot will be on the left and at the next traffic light turn left at West Wind Blvd.
- Make your first right into the shopping center behind The Integrity Bank.



ALL THE GEAR. ALL THE TIME.

www.laxworld-atlanta.com

770-640-1200



2010 KSU Club Lacrosse Schedule

DATE	DAY	TIME	OPPONENT	LOCATION
Feb. 6	Sat.	12 PM	Tennessee Wesleyan*	KSU - Owl's Nest
Feb. 20	Sat.	5:30 PM	Missouri State	KSU - Owl's Nest
Feb. 22	Mon.	3 PM	Davenport	KSU - Owl's Nest
Feb. 25	Thu.	8 PM	Georgia State*	Georgia State University
Feb. 28	Sun.	12 PM	North Florida	KSU - Owl's Nest
Mar. 7	Sun.	4:30 PM	Texas - San Antonio	Texas - San Antonio
Mar. 8	Mon.	6:30 PM	Sam Houston State	Sam Houston State
Mar. 9	Tue.	7 PM	Centenary	Centenary College
Mar. 20	Sat.	12 PM	Furman*	KSU - Owl's Nest
Mar. 21	Sun.	12 PM	Tenn. Chattanooga	KSU - Owl's Nest
Mar. 27	Sat.	2 PM	Reinhardt*	Reinhardt College
Mar. 28	Sun.	12 PM	Harding	KSU - Owl's Nest
Apr. 2	Fri.	6 PM	Georgia Southern	Georgia Southern
Apr. 3	Sat.	4 PM	SCAD	SCAD Field
Apr. 9	Fri.	7:30 PM	Emory*	KSU - Owl's Nest
Apr. 11	Sun.	12 PM	Palm Beach Atlantic	KSU - Owl's Nest
Apr. 23	Fri.	All Day	SELC Championship	Northview High School

* Denotes Divisional Game

www.ksulax.com